



## OMNIKEY® 5427 CK Reader

### CONTACTLESS READER WITH CCID AND KEYBOARD WEDGE INTERFACE IN NEW OMNIKEY DESKTOP HOUSING



- **Security** - Enhanced system security supporting low and high frequency credentials including HID Prox®, MIFARE® Classic, MIFARE DESFire® EV1, iCLASS®, iCLASS SE, and other SIO-enabled credentials.
- **Ease of use** - Straightforward utilization of existing access control credentials for PC login in both CCID and Keyboard Wedge operation modes.
- **CCID support** - Eliminates the need to install drivers on standard operating systems.
- **Keyboard Wedge support** - Retrieves data from a card and presents the information directly to any application by emulating keyboard strokes.

HID Global's OMNIKEY® 5427CK Reader functions in virtually any PC environment. Independent of the operating system and use case, the reader's CCID or Keyboard Wedge interface provide the ideal solution without the need to install or maintain drivers. This removes complex software lifecycle management issues in the field and accelerates time to market.

With the keyboard wedge functionality, data from the card can be retrieved and transformed for direct input into applications using keystroke emulation. This eliminates the need for organizations to manually enter card data into applications. In addition to the standard CCID and Keyboard Wedge operation modes, the reader includes an integrated, easy-to-use web-based management tool that enables

intuitive browser-based configuration without the need for special training. The OMNIKEY® 5427CK supports low and high frequency technology within a single device that enables seamless credential migration and mixed technology environments. The reader includes support for a wide range of low and high frequency card technologies, including HID Prox®, MIFARE® Classic, MIFARE DESFire® EV1, and iCLASS®, as well as iCLASS SE® and SEOS.

For embedded applications, the OMNIKEY 5427CK is also available as a reader board with an included Developer Tool Kit that provides all of the necessary tools and documentation to shorten integration cycles and to accelerate time to market with finished products.

#### NEW OMNIKEY DESKTOP FAMILY HOUSING:

- **Modern design and smaller form factor** - Small footprint and fit for professional environments
- **Card retainer** - For card-present operation mode where the card needs to stay on the reader
- **Optional vertical standing base** - For flexible positioning and support of single-hand operation
- **Optional mounting accessories** - Allows reader to be mounted in virtually any environment

For further information please visit the Developer Center: [www.hidglobal.com/main/developers/omnikey-5127-ck/](http://www.hidglobal.com/main/developers/omnikey-5127-ck/)

**FEATURES:**

**CCID Support**

- Native CCID implementation supporting WINDOWS®, LINUX® and MAC® operating systems.

**Keyboard Wedge**

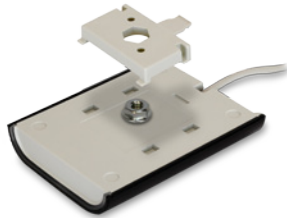
- Fully configurable and programmable keyboard wedge functionality featuring an integrated management console.
- Flexible configuration of data structures and output modes.

**Broad Credential Support**

- Dual frequency functionality allowing support for both low and high frequency credentials simultaneously.
- HID Prox®, MIFARE® Classic, MIFARE DESFire® EV1, iCLASS®, iCLASS SE®, and other SIO-enabled credentials.

**Enhanced Lifecycle Management**

- Easy firmware updates and configuration setting utilizing a Web interface,SNMP messages and configuration cards.
- Developer Tool Kit (DTK) available that contains product samples, development documentation, samples code and access to HID's developer portal.



**KEYBOARD WEDGE FEATURES INCLUDE:**

- Configurable Input & definable output fields
- Cascadeable free custom data fields
- Card-specific configurations
- Pre- / poststroke definitions and shortcuts
- Big / Little Endian Conversion
- HEX, BCD, BIN, DEC & ASCII output transformation
- Bitstream parsing of HID's Physical Access Control



**SPECIFICATIONS**

<b>Base Model Number</b>	OMNIKEY® 5427CK	
<b>Dimensions</b>	2.79" x 3.66" x 0.63" (71 mm x 93 mm x 16 mm)	
<b>Weight</b>	Approx.3.53 oz (100g)	
<b>Power Supply</b>	Bus powered	
<b>Operating Temperature</b>	32°- 158° F (0° - 70° C)	
<b>Operating Humidity</b>	10 - 90% Relative Humidity	
<b>Storage Temperature</b>	-4° - 176° F (-20° to 80° C)	
<b>International Protection Rating</b>	IP54 (dust / splashing water) (in preparation)	
<b>HOST INTERFACE</b>		
<b>Host Interface</b>	USB 2.0 (also compliant with USB 1.1)	
<b>Transmission Speed</b>	12 Mbps (USB 2.0 full speed)	
<b>CONTACTLESS SMART CARD INTERFACE</b>	<b>CCID</b>	<b>KEYBOARD WEDGE</b>
<b>Cards / Protocols High Frequency</b>	MIFARE™ Classic 1K / 4K, Ultra Light, Ultra Light C, Plus, MIFARE™ DESFIRE™ 0.6, MIFARE™ DESFIRE™ EV1, iCLASS®, iCLASS SE/SR, MIFARE SE, DESFire EV1 SE, T=CL, ISO 14443 A with up to 848 kbps transmission rate (depending on card), ISO 15693 with up to 26 kbps transmission rate (depending on card)	MIFARE™ Classic 1K / 4K, Ultra Light, Ultra Light C, Plus (Security Lvl 1), MIFARE™ DESFIRE™ 0.6, MIFARE™ DESFIRE™ EV1 (MAC / DES/3DES / 3K3DES / AES), iCLASS®, iCLASS® SE/SR, MIFARE SE, DESFire EV1 SE
<b>Cards / Protocols Low Frequency</b>	HID PROX®	HID PROX®
<b>Supported APIs</b>	PC/SC (ready for 2.01/ CCID mode)	Human Interface Device
<b>PC / SC Driver Support</b>	Compliant with native OS CCID drivers (in CCID mode). HID proprietary PC/SC drivers available for: Windows® XP / Vista / 7 (32 bit / 64 bit), 2003 Server, 2008 R2 Server, Linux® (32 / 64 bit, incl. Debian 6.0, Fedora 15, OpenSUSE 11.4, Ubuntu 11.04) &Mac® OS X (10.5 Leopard and higher, Intel 32 / 64 bit)	Compliant with native Human Interface Drivers
<b>Status Indicator</b>	Dual color LED (white=ready, blue=busy) Buzzer (programmable)	
<b>Color</b>	Cover Black / Body light grey	
<b>Accessories (included)</b>	Removable Card Holder for card-present operation	
<b>Optional Accessories (in preparation)</b>	Mounting Jacket & Adhesive Tape Vertical Standing Base (in preparation)	
<b>Connector Cable / Length</b>	USB Type A Connector / 78.7" (200 cm)	
<b>Customization Options</b>	Customer-specific logo / housing color (available upon request)	
<b>Composition</b>	PC	
<b>Meantime Between Failure(MTBF)</b>	500,000 hours	
<b>Compliance / Certification</b>	Microsoft® WHQ²	
<b>Approvals / Environmental</b>	Compliant RoHS (REACH), WEEE, UL, CE, FCC, ICES (Canada)	
<b>Warranty</b>	Two-year manufacturer's warranty. (For drivers, see complete lifetime support policy.)	

1 = 424 kbps default data rate, 848 kbps configurable through web interface  
2 = Windows® Hardware Quality Lab

**ASSA ABLOY**  
An ASSA ABLOY Group brand

© 2012 HID Global Corporation. All rights reserved. HID, the HID logo, OMNIKEY and the OMNIKEY logo are trademarks or registered trademarks of HID Global in the U.S. and/or other countries. All other trademarks, service marks and product or service names are trademarks or registered trademarks of their respective owners.  
2012-08-27-omnikey-5427-ck-reader-ds-en

North America: +1 949 732 2000  
Toll Free: 1 800 237 7769  
Europe, Middle East, Africa: +44 1440 714 850  
Asia Pacific: +852 3160 9800  
Latin America: +52 55 5081 1650

# Legacy Technology Services

**We Rent & Sell All Types Of Barcode Equipment**

Call now to talk to an expert

**866-271-9891**

[www.LegacyGlobal.com](http://www.LegacyGlobal.com)

Some brands we carry



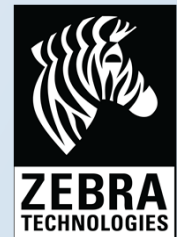
MOTOROLA

**Intermec**

**DATALOGIC™**

**Honeywell**

**EQUINOX**  
PAYMENTS



## About us

- Legacy Technology Services is a leading nationwide provider of mobile computing, barcode, printers and point of sale equipment and services.
- For over a decade, thousands of clients across North America have trusted us to provide equipment from leading manufacturers backed by the services to support them.

## Latest Hardware from top manufacturers

- Legacy handles virtually every major manufacturer of mobile computing, barcoding and point of sale equipment.

## Expert Repair and Maintenance services

- Legacy is one of the best repair facilities in North America

## Discontinued product sourcing

- They don't make it anymore? Our inventory also includes manufacturer close-outs and discontinued equipment to support our clients legacy infrastructure.

## Trade-in and Disposal services

- That old equipment laying around your facility may still have some value. Legacy routinely purchases equipment from our clients around the globe.
  - Data destruction
  - Hardware disposal
  - Auditing services

## Dedicated client account team

- Dedicated, highly trained account managers are here to answer all your questions and provide top notch service.

## Equipment rental services

- Sometimes renting is a better solution, Legacy's huge rental inventory provides the equipment you need for temporary needs and projects.



[Legacy, Inc.](http://Legacy, Inc.)

160 West Road,  
Ellington, CT 06029

Toll Free: 866-271-9891

Fax: 888-522-4684